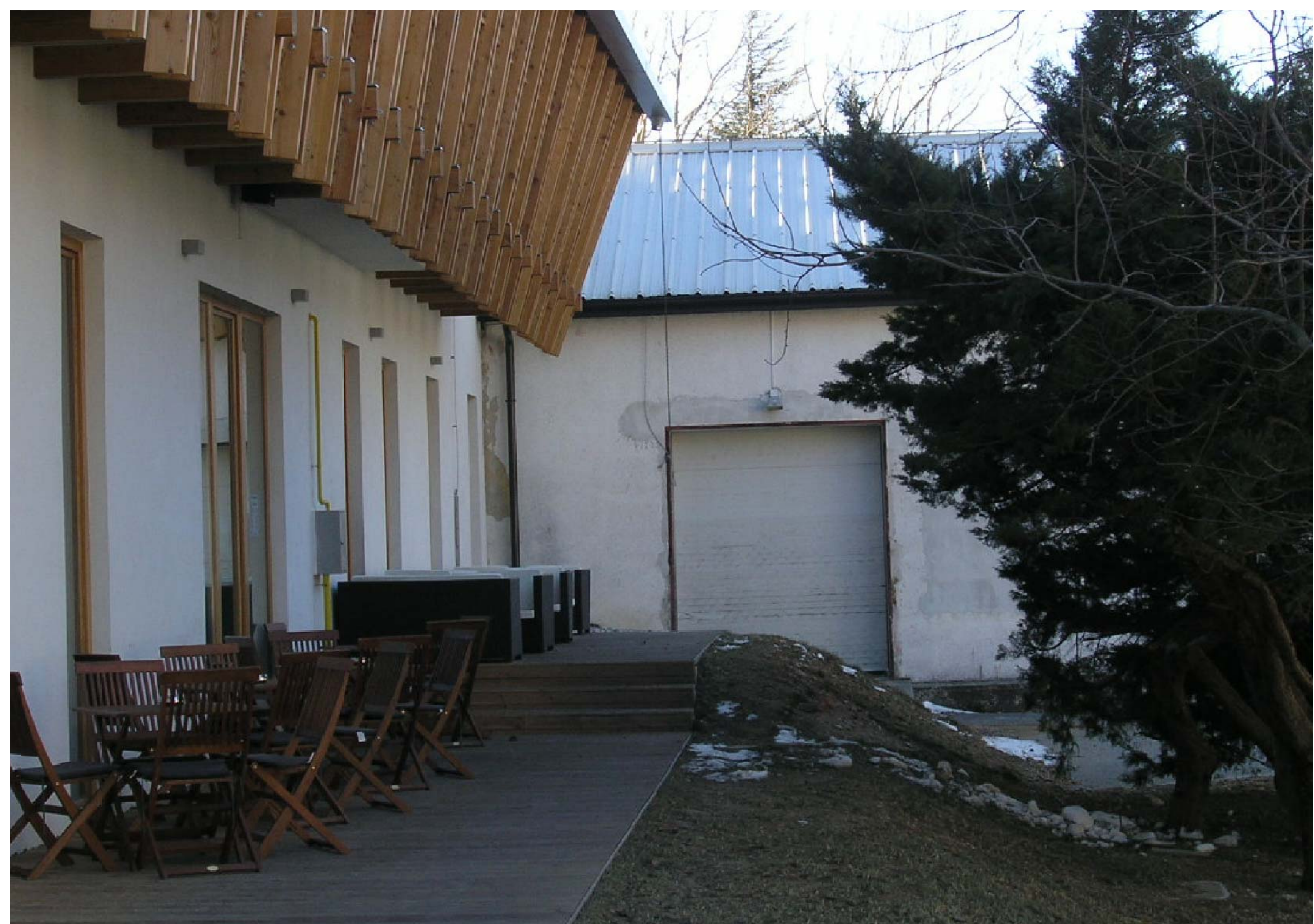




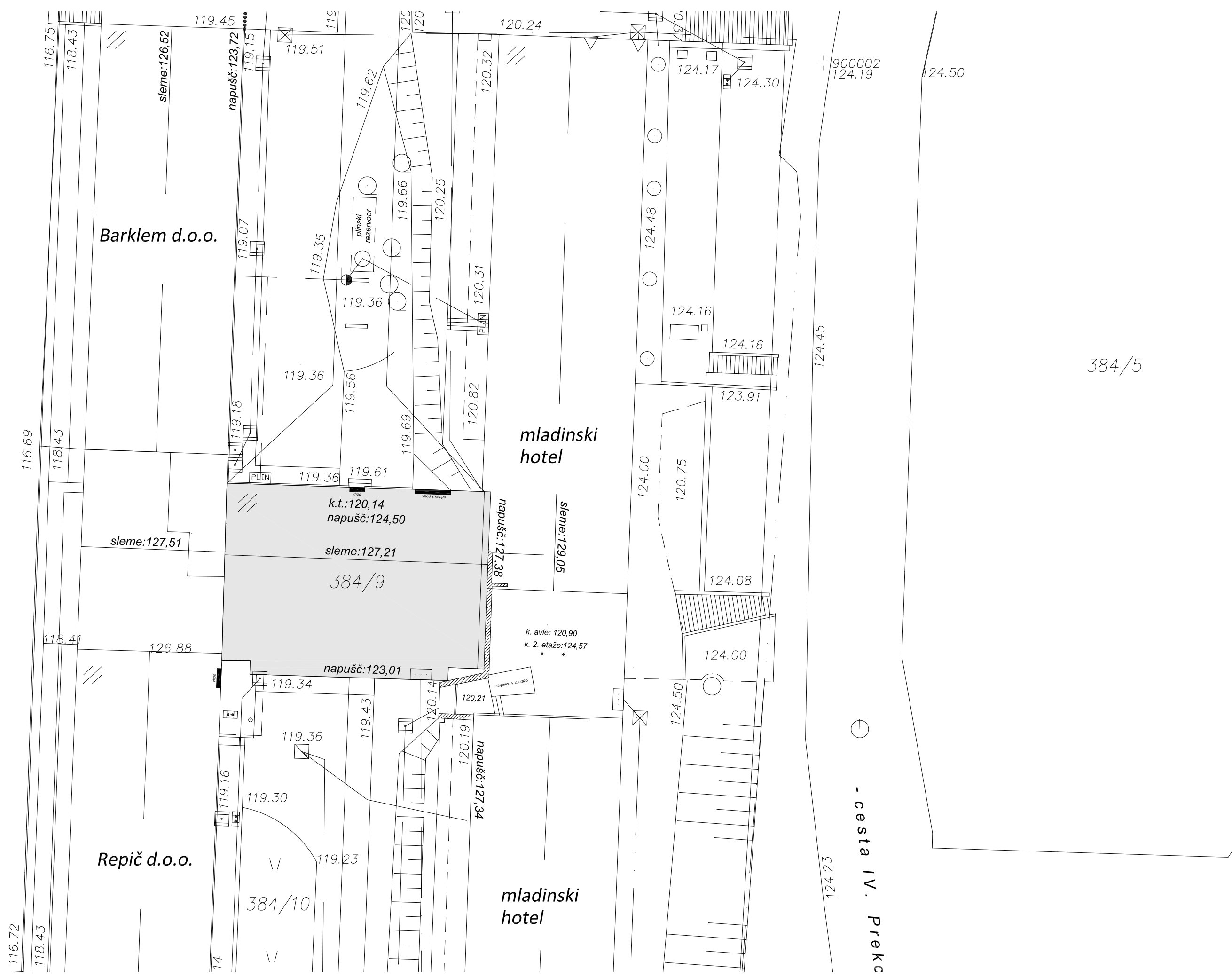
PROSTOR ZA TRŽENJE PODEŽELSKIH PRODUKTOV VIPAVSKE DOLINE





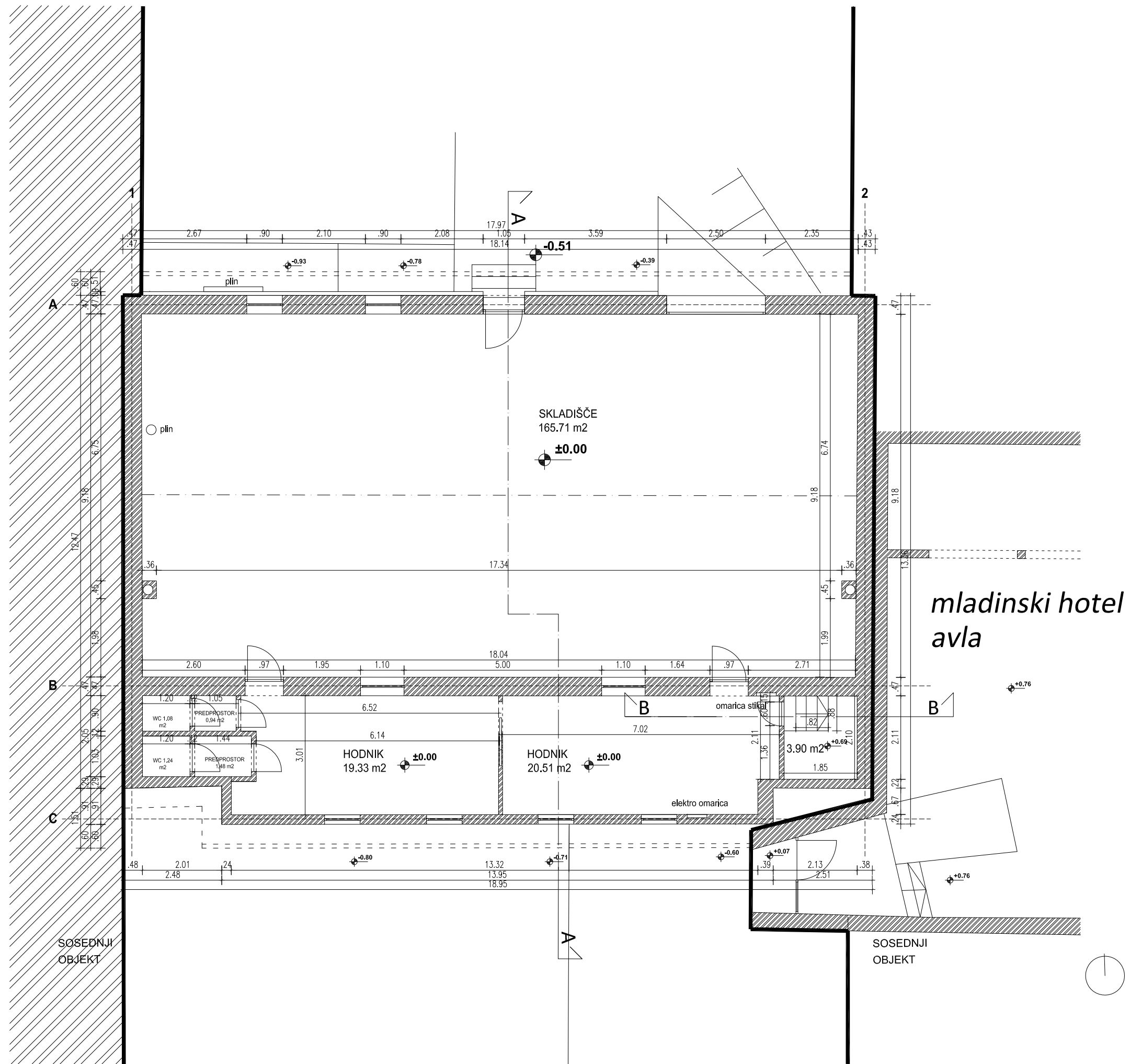




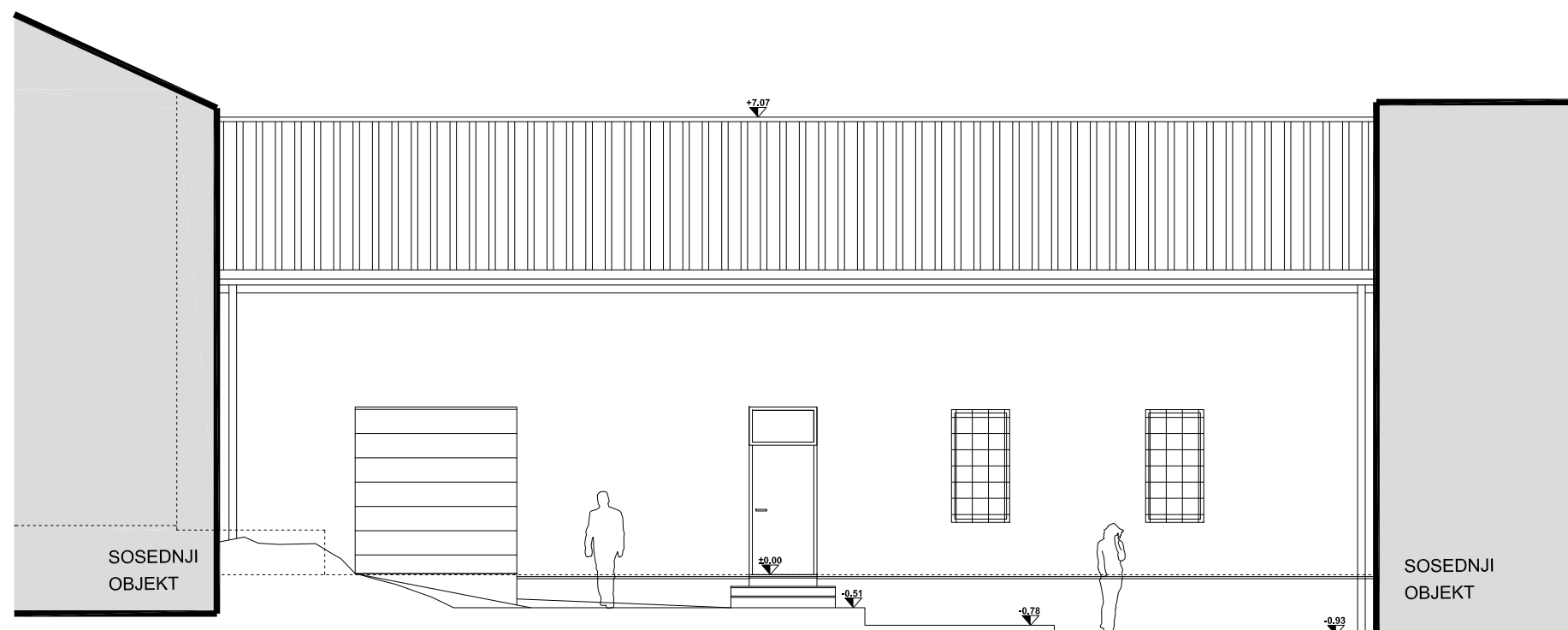
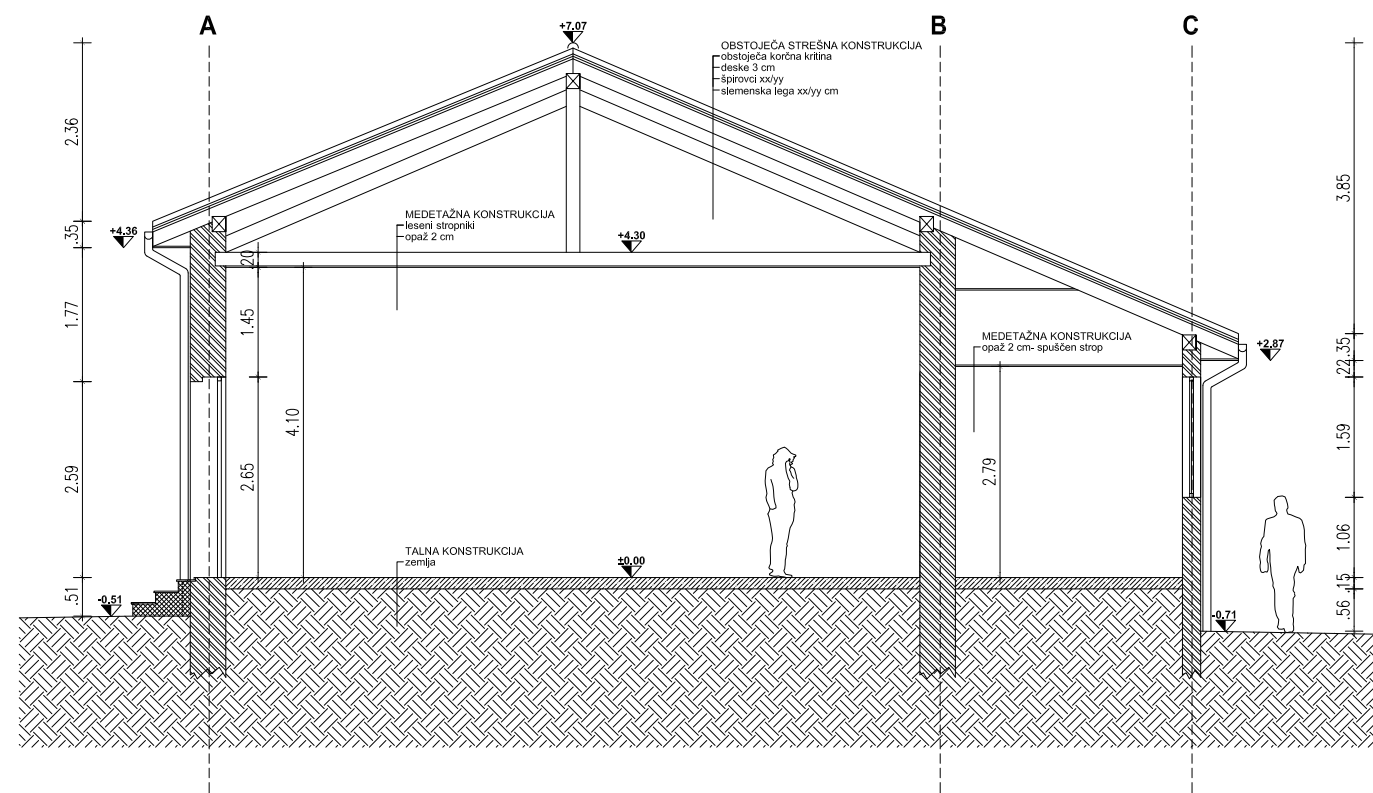


384/5

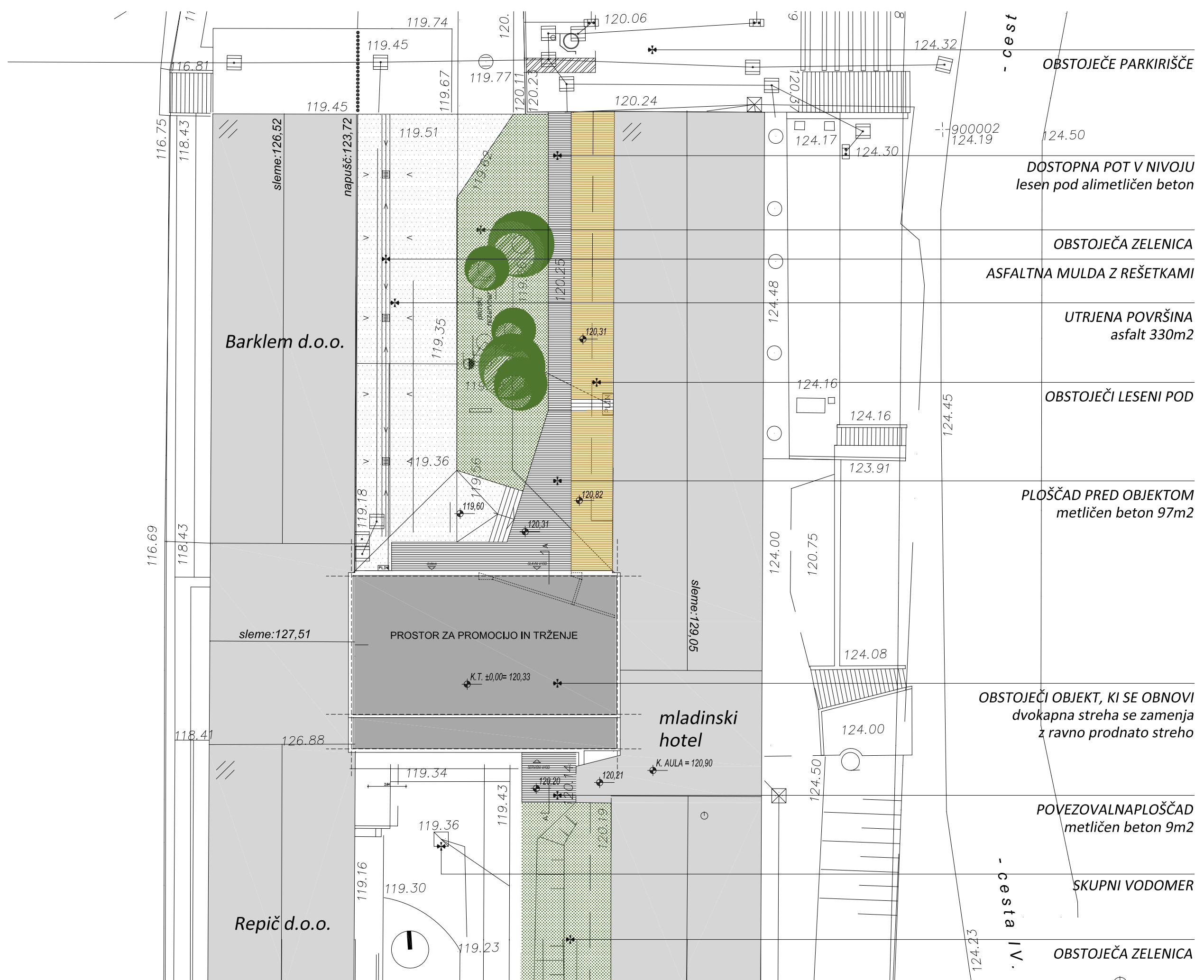
SITUACIJA - OBSTOJEČE STANJE



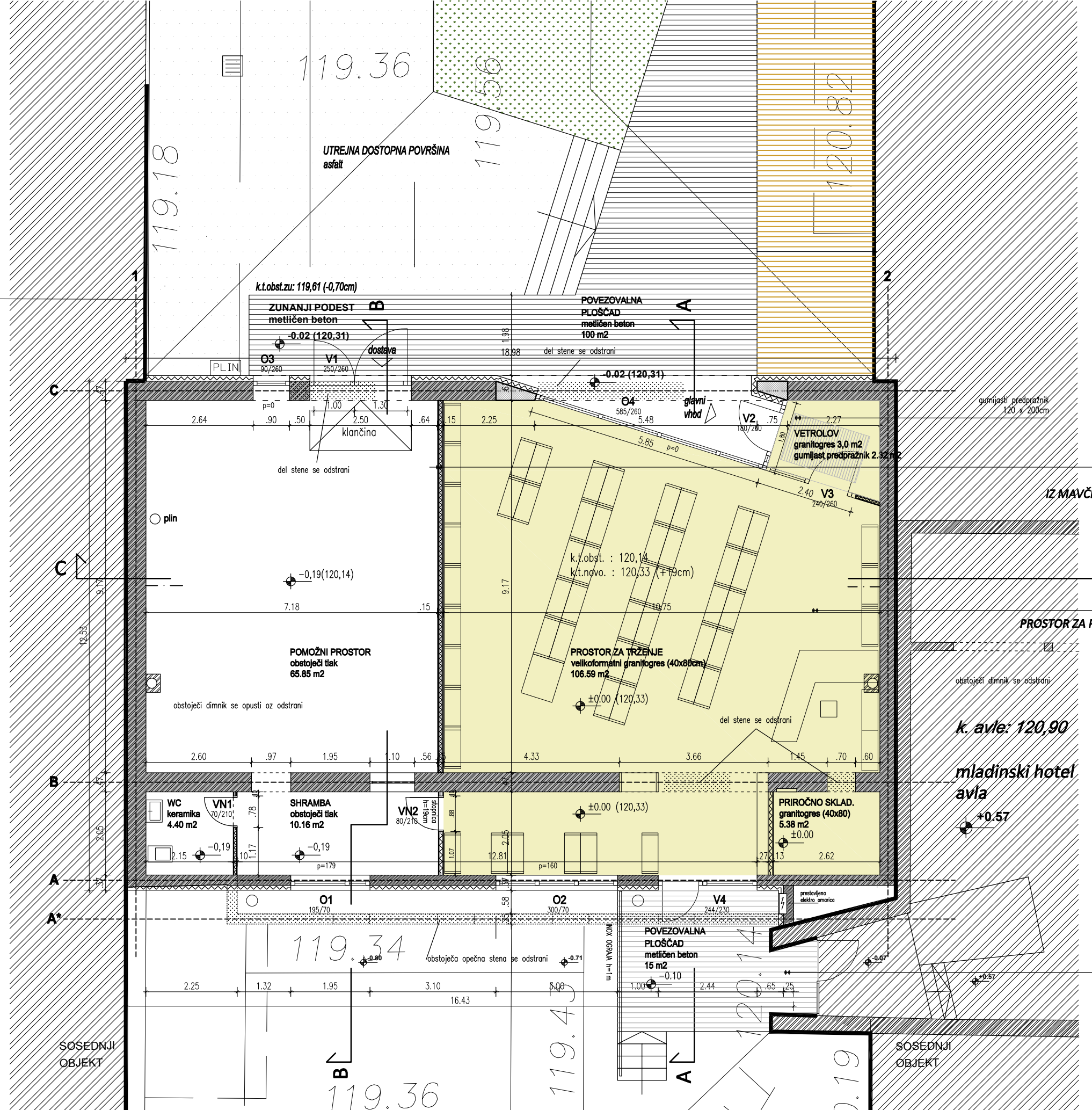
TLORIS PRITLIČJA - OBSTOJEČE STANJE



PREREZ A-A IN SEVERNA FASADA - OBSTOJEČE STANJE



SITUACIJA - NOVO STANJE



LEGENDA ŠRAFOR in MATERIALOV

- OBSTOJEČA OPEČNA STENA
- ARMIRAN BETON
- NOV OPEČNI ZID
- RUŠITEV
- PREDELNA STENA IZ MAVČNIH PLOŠČ

SEZNAM PROSTOROV S POVRŠINAMI:

VETROLOV	granitogres, predpražnik	5.32 m ²
PROSTOR ZA TRZENJE	granitogres (40x80)	106.59 m ²
PRIROČNO SKLAD.	granitogres (40x80)	5.38 m ²
POMOŽNI PROSTOR	obstoječi tlak	65.85 m ²
SHRAMBA	obstoječi tlak	10.16 m ²
WC	obstoječi tlak keramika	4.40 m ²
skupaj		197,70

**PREDELNA STENA
IZ MAVČNO KARTONSKIH PLOŠČ**
d=15cm, h=3,0m

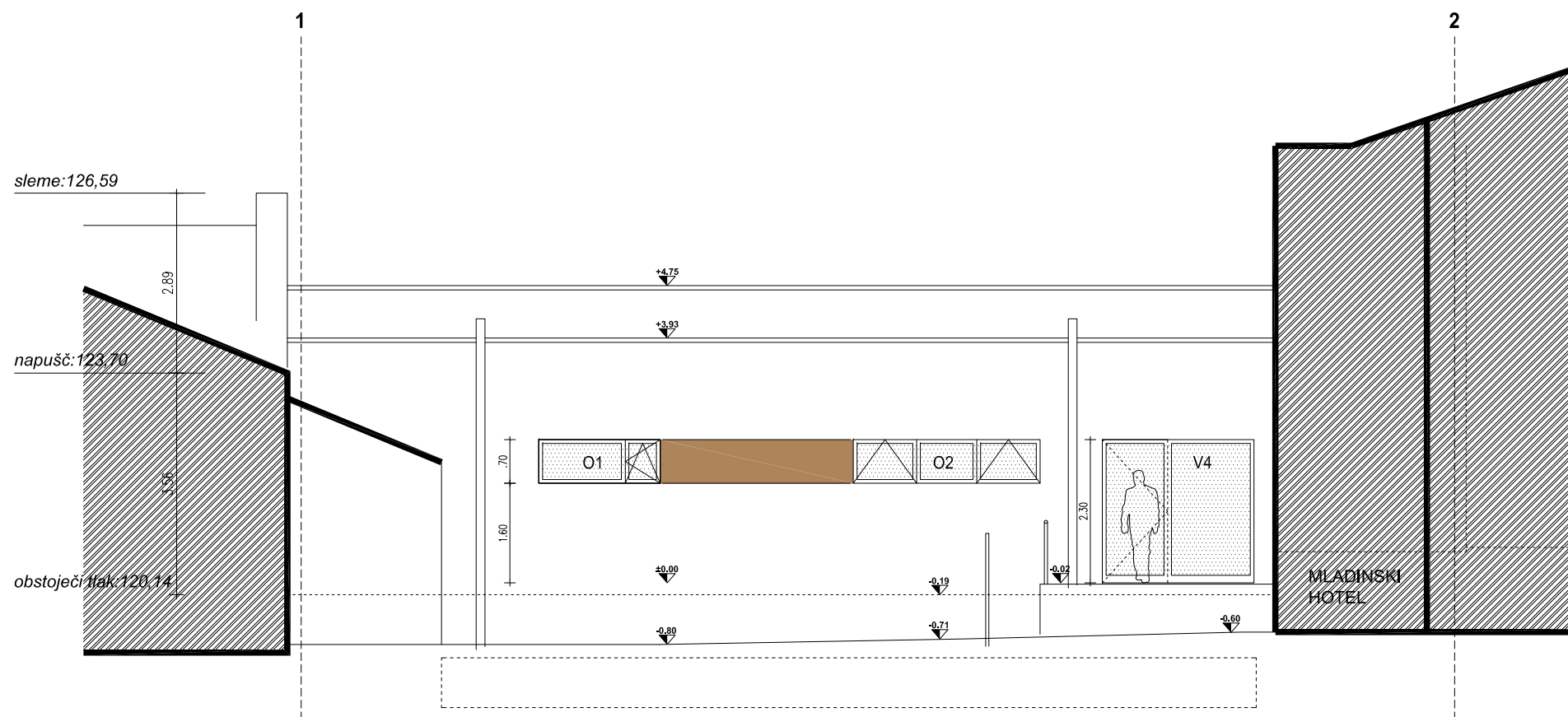
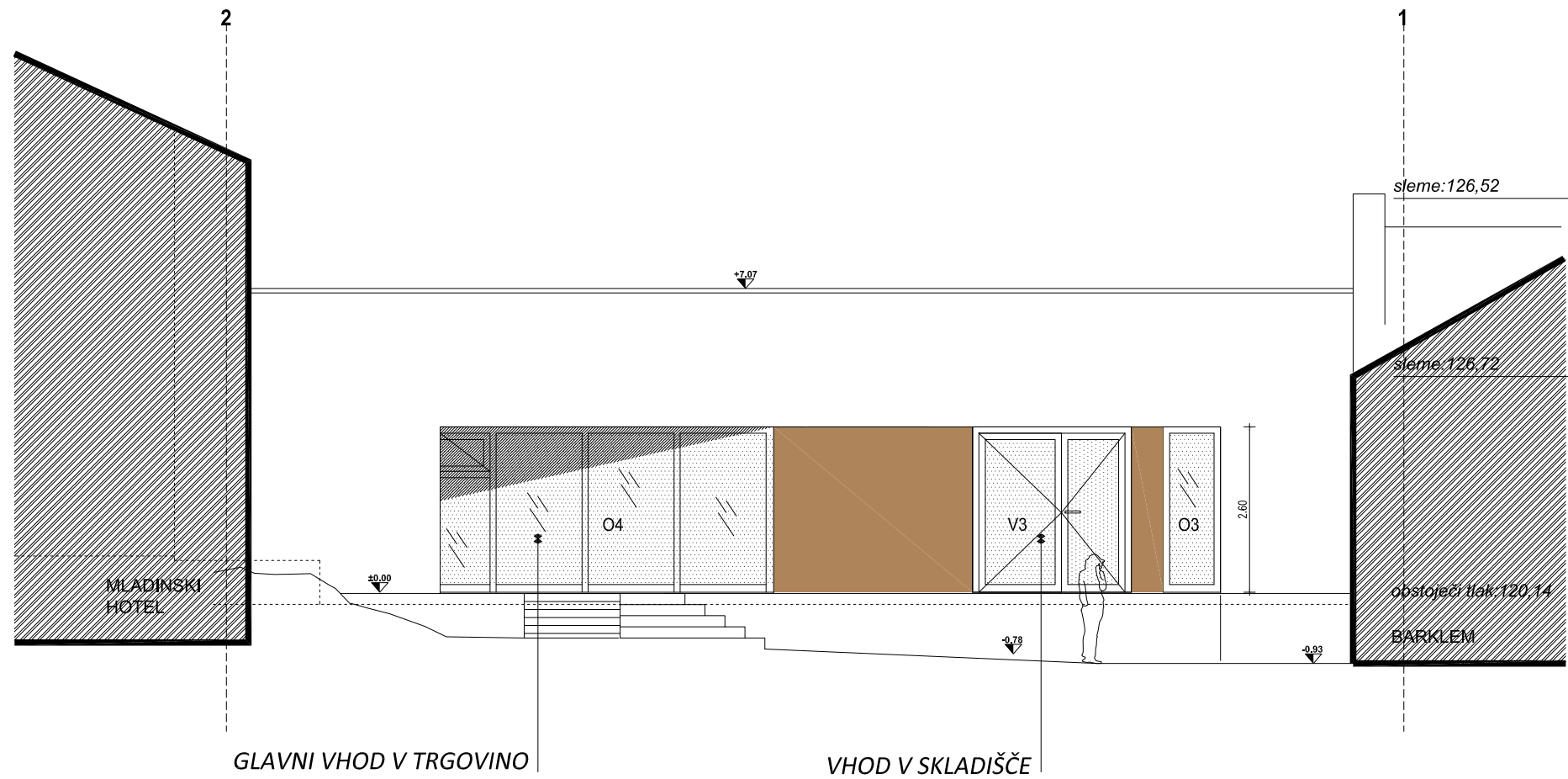
**PROSTOR ZA PROMOCIJO IN TRZENJE
KMETIJSKIH IZDELKOV**
109,23m²

k. avle: 120,90

**mladinski hotel
avla**
+0,57

**POVEZAVA Z AVLO
MLADINSKEGA HOTELA**

TLORIS PRITLIČJA - NOVO STANJE



SEVERNA IN JUŽNA FASADA - NOVO STANJE







